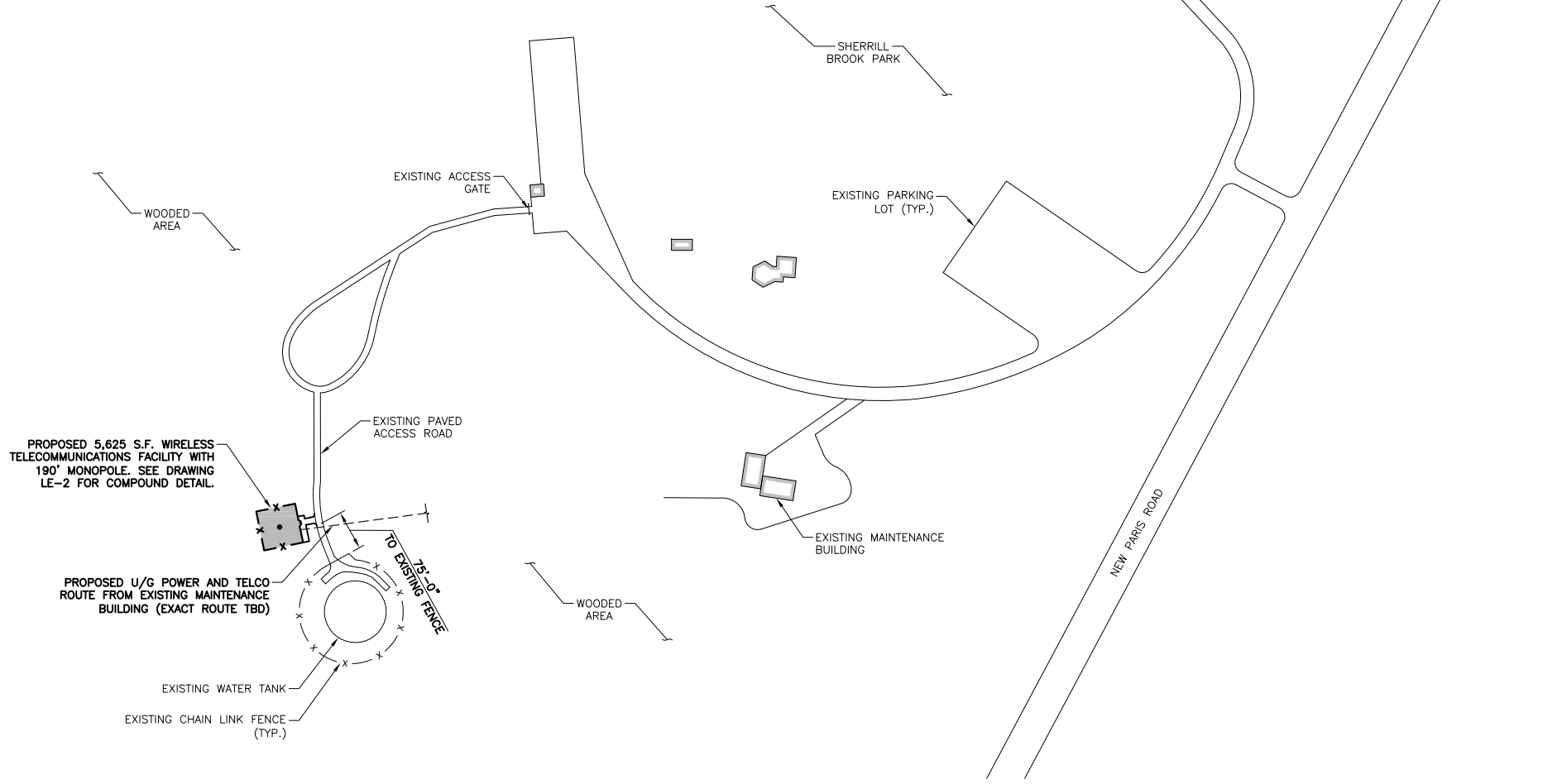


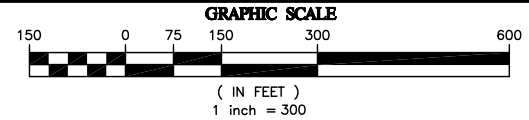
NOTE:

THIS LEASE IS SCHEMATIC IN NATURE & IS INTENDED TO PROVIDE GENERAL INFORMATION REGARDING THE LOCATION & SIZE OF THE PROPOSED WIRELESS COMMUNICATIONS FACILITY. SITE TO BE SURVEYED PRIOR TO CONSTRUCTION.



NOTE:
ALL EQUIPMENT LOCATIONS ARE APPROXIMATE AND ARE SUBJECT TO APPROVAL BY LESSEE/LICENSEE STRUCTURAL AND RF ENGINEERS.

OVERALL SITE PLAN



21 B Street
Burlington, MA 01803
Tel: 781.273.2500
Fax: 781.273.3311
www.ebiconsulting.com

EBI JOB NO.: 8117000152

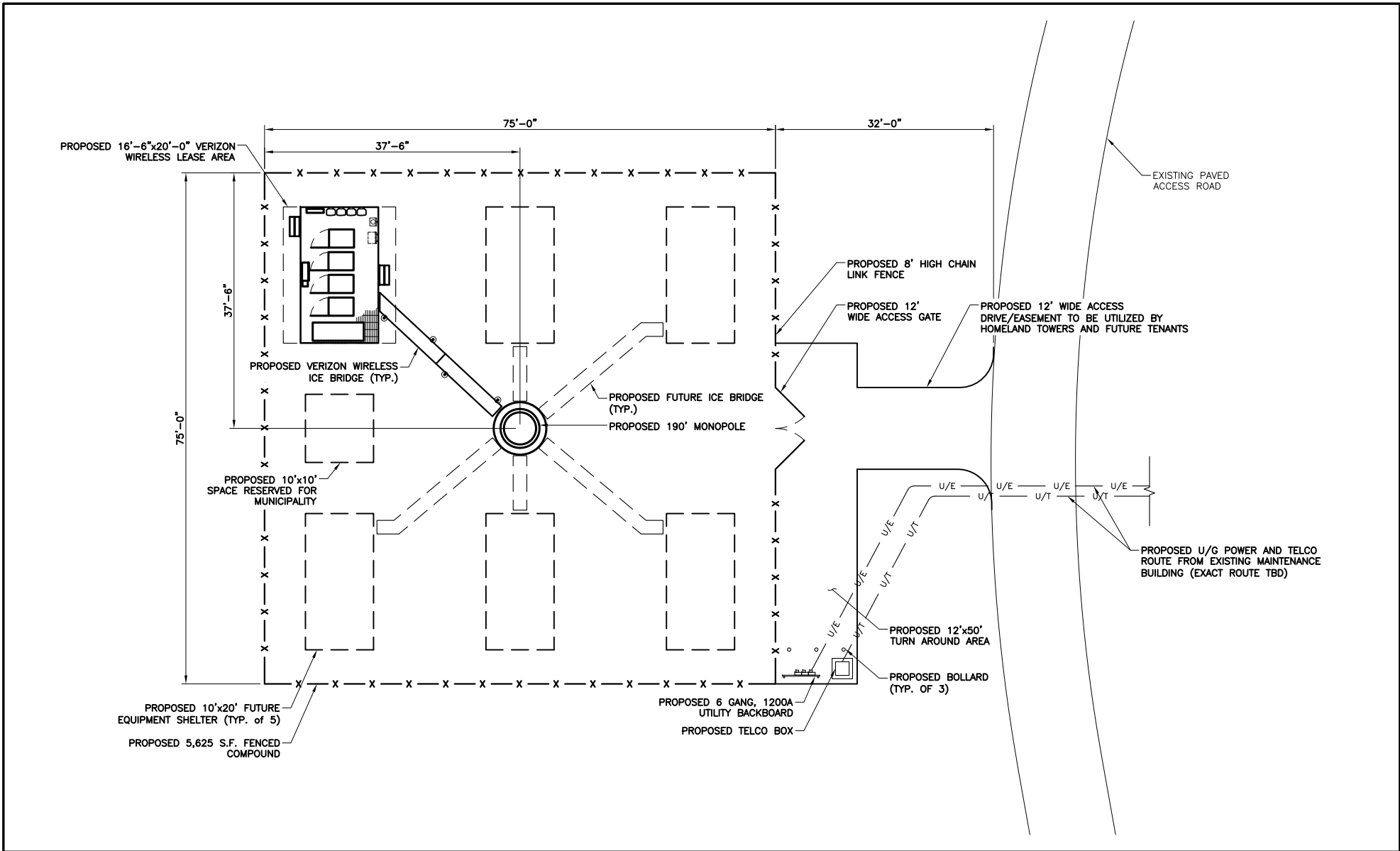


SITE INFO:
NY303 – CLINTON ROAD
NEW PARIS ROAD
NEW HARTFORD, NY 13413

SUBMITTALS			
NO.	DATE	DESCRIPTION	BY
A	03/06/17	FOR REVIEW	KO
B	03/21/17	REVISED PER COMMENTS	KO

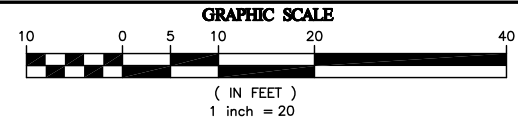
DRAWN BY: KO
CHECKED BY: DP
DATE: 03/06/17

SHEET NO:
LE-1



NOTE:
 ALL EQUIPMENT LOCATIONS ARE APPROXIMATE AND ARE SUBJECT TO APPROVAL BY LESSEE/LICENSEE STRUCTURAL AND RF ENGINEERS.

COMPOUND PLAN



EBC Consulting
 environmental | engineering | due diligence

21 B Street
 Burlington, MA 01803
 Tel: 781.273.2500
 Fax: 781.273.3311
 www.ebcconsulting.com

EBC JOB NO.: 8117000152

HOMELAND TOWERS

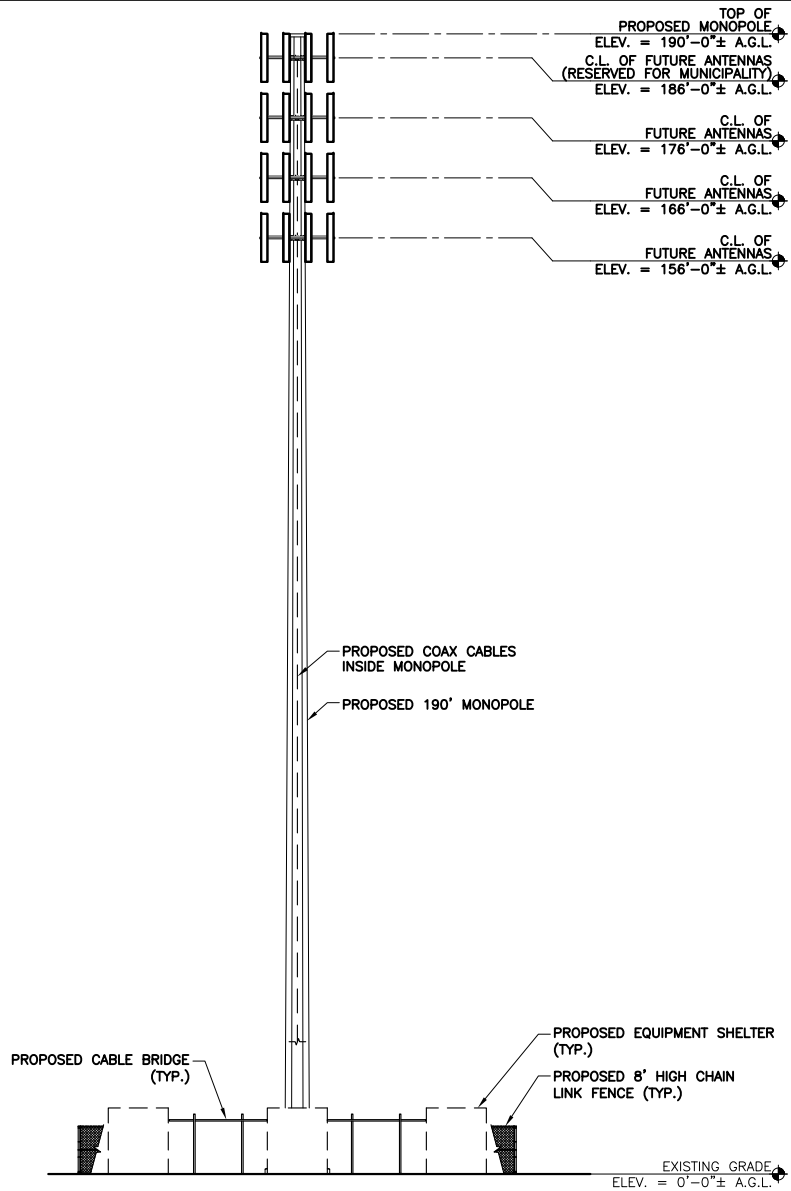
9 HARMONY STREET, 2ND FLOOR
 DANBURY, CT 06810

SITE INFO:
 NY303 - CLINTON ROAD
 NEW PARIS ROAD
 NEW HARTFORD, NY 13413

SUBMITTALS			
NO.	DATE	DESCRIPTION	BY
A	03/06/17	FOR REVIEW	KO
B	03/21/17	REVISED PER COMMENTS	KO

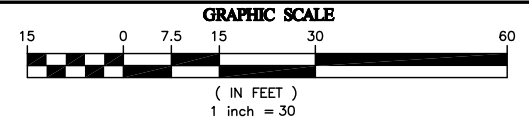
DRAWN BY:	KO
CHECKED BY:	DP
DATE:	03/06/17

SHEET NO:
LE-2



NOTE:
 ALL EQUIPMENT LOCATIONS ARE APPROXIMATE AND ARE SUBJECT TO APPROVAL BY LESSEE/LICENSEE STRUCTURAL AND RF ENGINEERS.

TOWER ELEVATION



21 B Street
 Burlington, MA 01803
 Tel: 781.273.2500
 Fax: 781.273.3311
 www.ebiconsulting.com



EBI JOB NO.: 8117000152

SITE INFO:
NY303 – CLINTON ROAD
 NEW PARIS ROAD
 NEW HARTFORD, NY 13413

SUBMITTALS			
NO.	DATE	DESCRIPTION	BY
A	03/06/17	FOR REVIEW	KO
B	03/21/17	REVISED PER COMMENTS	KO

DRAWN BY:	KO	SHEET NO: LE-3
CHECKED BY:	DP	
DATE:	03/06/17	